

COMMERCIAL RESTAURANT EQUIPMENT

PRESENTED BY:

LEASETAURANT

Restaurant Equipment Leasing & Sales



Beverage • Cooking • Dishwashing • Food Preparation • Refrigeration And More!



American Dish Service
Manufacturers of Ware Washing Equipment



blendtec

REFRIGERATOR MANUFACTURER
Turbo air

COFFEE, CAPPUCCINO, TEA & ESPRESSO



**PAYMENTS
AS LOW AS
\$40.94
PER MONTH**

**Equipment Guard
#1 in Equipment Protection**

Brand: Fetco

**Type: CBS-2132XTS (E213252) |
19' | Coffee Brewer for Airpot**

**twin, 1.0 gallon/3.0 liter capacity,
touchscreen, customizable screen,
diagnostics and manual hot water service**

Warranty Options



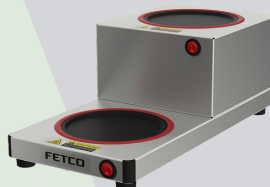
Parts & Labor Included

Shop Now

Related Brands



Admiral Craft
Equipment Corp.
Airpot



FETCO
Coffee Warmer



Admiral Craft
Equipment Corp.
Coffee Percolator

COLD & FROZEN BEVERAGE DISPENSERS



**PAYMENTS
AS LOW AS
\$241.25
PER MONTH**

**Equipment Guard
#1 in Equipment Protection**

Brand: Spaceman

Type: 6455-C | 18' | Frozen Drink Machine, Non-Carbonated, Cylinder Type

countertop, air-cooled self-contained, (2) 4 qt. (3.8 liter) fast freeze technology and thermal overload protection

Warranty Options



Parts & Labor Included

Shop Now

Related Brands



Admiral Craft
Equipment Corp.

Frozen Drink Machine



DELFIELD
A Welbilt Brand

Beverage Dispensers



FETCO

Frozen Drink Machine

COMMERCIAL JUICERS



**PAYMENTS
AS LOW AS
\$184.32
PER MONTH**

**Equipment Guard
#1 in Equipment Protection**

Brand: Zummo

**Type: Z14-N | 18' | Juicer,
Electric**

**20 lbs basket capacity, (16) fruits per
minute, 3.7 gal. capacity bins, top
mounting rotating basket**

Warranty Options



Parts & Labor Included

Shop Now

Related Brands



blendtec
Commercial Blenders



robot coupe
Electric Juicer



robot coupe
Juice Extractor

BROILERS & CHARBROILERS



**PAYMENTS
AS LOW AS
\$572.01
PER MONTH**

**Equipment Guard
#1 in Equipment Protection**

Brand: Vulcan

**Type: VBB2 | 36' | Broiler, Deck-Type,
Gas**

**Heavy Duty range match, Gas, double-
deck ceramic burners, (2) 25-1/2 x 24-1/2
cooking grids, spring balanced, 5 position
grip, stainless steel**

Warranty Options



Parts & Labor Included

Shop Now



Related Brands



AMERICAN RANGE
Gas Broiler



 **JADE**
Wood Burning



 **MONTAGUE**
Charcoal Burning

COMMERCIAL FRYERS



**PAYMENTS
AS LOW AS
\$274.01
PER MONTH**

**Equipment Guard
#1 in Equipment Protection**

Brand: Frymaster

**Type: RE180-17 | 20' | Fryer,
Electric, Floor Model, Full Pot**

**Electric, floor model, open-pot design,
automatic melt cycle, drain safety switch,
(2) baskets, stainless steel frypot**

Warranty Options



Parts & Labor Included

Shop Now

Related Brands



Dean
Electric Fryer



Dukers
Gas Fryer



BROASTER
EQUIPMENT
Ventless Fryer

COMMERCIAL GRIDDLES & GRILLS



**PAYMENTS
AS LOW AS
\$75.78
PER MONTH**

**Equipment Guard
#1 in Equipment Protection**

Brand: Garland US Range

**Type: GTGG24-GT24M | 23' |
Griddle, Gas, Countertop**

**heavy-duty cooking surface, 1 thick
smooth steel griddle plate, snap action
thermostatic controls, stainless steel**

Warranty Options



Parts & Labor Included

Shop Now

Related Brands



asber 
Gas Griddle



 **GARLAND**
A Welbilt Brand
Electric Griddle




Panini Grill

COMMERCIAL OVENS



**PAYMENTS
AS LOW AS
\$305.28
PER MONTH**

**Equipment Guard
#1 in Equipment Protection**

Brand: Lincoln

**Type: 1117-000-U | 56" | Oven,
Gas, Conveyor**

**Conveyor Pizza Oven, LP Gas, front loading,
single-deck, single conveyor belt, glass
access window**

Warranty Options



Parts & Labor Included

Shop Now

Related Brands



BAKERS PRIDE

Gas Oven



CONVOTHERM
A Welbilt Brand

Gas Combi Oven



MERRYCHEF
A Welbilt Brand

Combination Rapid Cook

COMMERCIAL RANGES



**PAYMENTS
AS LOW AS
\$361.11
PER MONTH**

**Equipment Guard
#1 in Equipment Protection**

Brand: Southbend

**Type: 4604DC-5L | 60" | Range,
60 Restaurant, Gas**

**(9) burners, standing pilot, (1) standard
oven with battery spark ignition, (1)
cabinet base**

Warranty Options



Parts & Labor Included

Shop Now

Related Brands



AMERICAN RANGE
Gas Range



Globe
Induction Range



VULCAN
Electric Range

COMMERCIAL STEAMERS



**PAYMENTS
AS LOW AS
\$215.62
PER MONTH**

**Equipment Guard
#1 in Equipment Protection**

Brand: Cleveland

**Type: 21CET8 2083QS | 21' | Steamer,
Convection, Countertop**

**Convection Steamer, electric, countertop,
1 compartment, (3) pans per compartment
capacity, left-hand hinged door**

Warranty Options



Parts & Labor Included

Shop Now

Related Brands



Admiral Craft
Equipment Corp.
Countertop Steamer



CLEVELAND
A Welbilt Brand
Direct-Steam Steamer



VULCAN
Convection Steamer

COMMERCIAL KETTLES

**PAYMENTS
AS LOW AS
\$946.64
PER MONTH**

**Equipment Guard
#1 in Equipment Protection**

Brand: Vulcan

**Type: EL80 | 58' | Kettle,
Electric, Stationary**

**80-gallon capacity, spring assisted
hinged cover with heavy duty pivot
assembly, stainless steel construction**

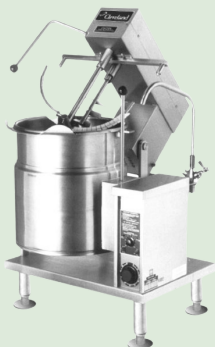
Warranty Options



Parts & Labor Included

Shop Now

Related Brands



CLEVELAND
A Welbilt Brand
Electric Kettle



VULCAN
Direct Steam Kettle



CLEVELAND
A Welbilt Brand
Gas Kettle

COMMERCIAL PIZZA OVENS



**PAYMENTS
AS LOW AS
\$456.63
PER MONTH**

**Equipment Guard
#1 in Equipment Protection**

Brand: Marsal

**Type: MB-236 | 52' | Pizza Bake
Oven, Deck-Type, Gas**

**(1) baking chamber, brick lined ceiling,
thermostatically controlled, double
paneled door, stainless steel**

Warranty Options



Parts & Labor Included

Shop Now

Related Brands



GARLAND®
A Welbilt Brand
Gas Deck-Type



MARSAL
PIZZA OVENS
Gas Deck-Type



TURBOCHEF™
Electric Countertop

SPECIALTY COOKING EQUIPMENT



**PAYMENTS
AS LOW AS
\$282.56
PER MONTH**

**Equipment Guard
#1 in Equipment Protection**

Brand: Pitco

**Type: SSPE14 | 0' | Pasta Cooker,
Electric**

**12 gallon capacity, 4 button digital
controller, stainless steel, (Pasta baskets
not included)**

Warranty Options



Parts & Labor Included

Shop Now

Related Brands



Rice/ Grain Cooker



**JADE
Gas Pasta Cooker**



**AMERICAN RANGE
Gas Gyro Broiler**

TILT SKILLETS / BRAISING PANS



**PAYMENTS
AS LOW AS
\$508.25
PER MONTH**

**Equipment Guard
#1 in Equipment Protection**

Brand: Vulcan

**Type: VE30 | 36' | Tilting Skillet
Braising Pan, Electric**

**30-gallon capacity, 36 wide open base,
manual tilt, 9 deep stainless steel pan
with gallon markings**

Warranty Options



Parts & Labor Included

Shop Now

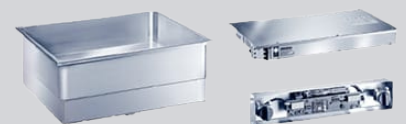
Related Brands



CLEVELAND
A Welbilt Brand
Gas Braising Pan



CLEVELAND
A Welbilt Brand
Electric Braising Pan



GARLAND
A Welbilt Brand
Induction Braising Pan

TOASTERS & BREAKFAST EQUIPMENT



**PAYMENTS
AS LOW AS
\$44.45
PER MONTH**

**Equipment Guard
#1 in Equipment Protection**

Brand: Admiral Craft

**Type: CVYT-120 | 14' | Toaster,
Conveyor Type**

**280-300 pieces/hour, conveyor belt,
adjustable speed, pull out crumb tray,
heavy duty stainless steel construction**

Warranty Options



Parts & Labor Included

Shop Now

Related Brands



Admiral Craft
Equipment Corp.
Conveyor Toaster



Admiral Craft
Equipment Corp.
Single Waffle Maker



Admiral Craft
Equipment Corp.
Dual Waffle Maker

COMMERCIAL DISHWASHERS



**PAYMENTS
AS LOW AS
\$173.99
PER MONTH**

**Equipment Guard
#1 in Equipment Protection**

Brand: CMA Dishmachines

Type: CB | 44' | Dishwasher, Door Type

**Double Rack Low Temperature, Right Door
Configuration, Chemical Sanitizing Corner
Dishwasher**

Warranty Options



Parts & Labor Included

Shop Now

Related Brands



ADS
American Dish Service
Manufacturers of Ware Washing Equipment

Undercounter



Ventless



Jackson
Warewashing Systems

Glass/ Undercounter

DISHWASHER CHECK LIST TO SELF MAINTAIN YOUR COMMERCIAL LEASE TO OWN DISHWASHER

1. It's good to clean the machine every few days by simply taking a rag and wiping down any external grease or grease that builds around the edges and into the water build up area in front. Just a soapy wet rag will do with dish soap.
2. Add a cup of de-limer once a month and run the machine for 10 minutes on de-lime mode and the machine will basically clean it self. You can purchase de-limer here <https://www.restaurantdepot.com> or simply look up their location nearest you <https://www.restaurantdepot.com/locations/find-a-warehouse/> and just stop in.
3. Make sure you never leave food or silverware stuck inside the machine because it can get lodged into the motor below. Do always be conscious of that daily.
4. Every 5-6 months, it is good practice to change out the "squeeze tubes" that pick up the dishwasher chemicals in the front of the machine inside the turning plastic pumps. Just remove the cover and carefully slide the tube out & replace with a new one. You can purchase dishwasher squeeze tubes here <http://www.tcdparts.com>. Or by giving the customer service rep your dishwasher model number. They know which tubes are correct and other ancillary parts needed. Simply call **800-823-8318** that's TCD Parts, great company.
5. Lastly, you will need to have a source to purchase your dishwasher chemicals and my personal recommendation nationally is Restaurant Depot. There is usually one in every city or a competitor to them. Either way, you will save 75% at these stores in comparison to buying from the food companies or Ecolab. Here is the website for Restaurant Depot <https://www.restaurantdepot.com/>, just enter your zip code here into the store locator <https://www.restaurantdepot.com/locations/find-a-warehouse> you will save on average \$2000-\$2500 a year on wasted money for over priced chemicals.

THESE ARE THE BASIC REQUIRED STEPS TO TAKE IN MAINTAINING YOUR DISHWASHER SO YOU CAN AVOID PAYING 5X THE AMOUNT TO THE "BIG BOX" CHEMICAL COMPANIES MOVING FORWARD!

FOR ANY OTHER MAJOR REPAIRS THAT YOU CAN'T REPAIR ON YOUR OWN YOU CAN ALWAYS TAKE ADVANTAGE OF OUR AVAILABLE FULL COVERAGE WARRANTY PROGRAM WHICH WILL REPAIR 100% PARTS AND LABOR FOR 4 YEARS AFTER THE MANUFACTURER'S 1 YEAR WARRANTY EXPIRES, SO 5 YEARS TOTAL WORRY FREE WARRANTY AND WITH THIS UNIQUE OFFERING YOU WILL SAVE EASILY 50-75% IN WASTED MONEY COMPARED TO INDEFINITE RENTING! STOP OVER-PAYING TODAY, START SAVING, USE THE MONEY FOR YOUR EMERGENCIES NOT TO GROW THE RENTAL COMPANIES POCKETS!

Sincerely,

Team Leasetaurant 2021

COMMERCIAL SINKS



**PAYMENTS
AS LOW AS
\$14.64
PER MONTH**

**Equipment Guard
#1 in Equipment Protection**

Brand: Blue Air

**Type: BS3-18-12/N | 60' | Sink,
(3) Three Compartment**

**Sink, 3-compartments, no drainboard,
stainless steel, stainless steel legs with
adjustable feet**

Warranty Options



Parts & Labor Included

Shop Now

Related Brands



Blue Air
COMMERCIAL REFRIGERATION

(2) Two Compartment



Hubbell
WATER HEATERS
Electric Sink Heater



Turbo air
REFRIGERATOR MANUFACTURER
(3) Three Compartment

FOOD DISPLAY, WARMING & PREPARATION



**PAYMENTS
AS LOW AS
\$268.87
PER MONTH**

**Equipment Guard
#1 in Equipment Protection**

Brand: True Mfg.

**Type: STA1HPT-1G-1S | 27' |
Heated Cabinet, Pass-Thru**

**(1) glass door front, cam-lift hinges, digital
temperature control, (3) chrome shelves,
stainless steel front**

Warranty Options



Parts & Labor Included

Shop Now

Related Brands



True®
Food Holding/ Warming



Nosa
Food Preparation



Dukers®
Work Tables

FOOD PREPARATION



**PAYMENTS
AS LOW AS
\$32.25
PER MONTH**

**Equipment Guard
#1 in Equipment Protection**

Brand: Admiral Craft

**Type: BDPM-20 | 19' | Mixer,
Planetary**

**3-speed, manual timer, stainless steel
wire bowl guard, includes: stainless steel
mixing bowl, wire whisk, dough hook**

Warranty Options



Parts & Labor Included

Shop Now

Related Brands



Commercial Mixers



Meat Processing



Meat Slicers

WORK TABLES



**PAYMENTS
AS LOW AS
\$4.63
PER MONTH**

**Equipment Guard
#1 in Equipment Protection**

Brand: Blue Air

Type: EW2448 | 48" | Work Table,
40 - 48, Stainless Steel Top

48W x 24D x 34H, 430 stainless steel top,
galvanized adjustable undershelf & legs,
adjustable plastic bullet feet, NSF

Warranty Options

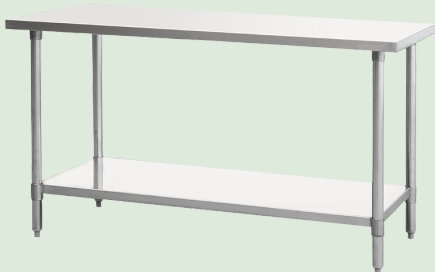


Parts & Labor Included

Shop Now



Related Brands



Stainless Steel Table



Equipment Stand



**COMMERCIAL JUICERS
Cabinet Base**

EXPRESS ORDER

FOOD SAFE LOCKER

PICKUP HERE ↓

PAYMENTS
AS LOW AS
\$187.15
PER MONTH

PAYMENTS
AS LOW AS
\$342.58
PER MONTH

Equipment Guard
#1 in Equipment Protection

Brand: Merco

103 & 104FT | 39' | Food Safe Locker,
Countertop

Each compartment is equipped with a
camera sensors (2) Ethernet ports,
galvannized steel construction

[Shop Now](#)

Warranty Options



Parts & Labor Included



MERCO[®]

A Welbilt Brand

BACK BAR / DRAFT COOLERS



**PAYMENTS
AS LOW AS
\$97.50
PER MONTH**

**Equipment Guard
#1 in Equipment Protection**

Brand: Blue Air

Type: BDD59-2S-HC | 59' | Draft Beer Cooler

side-mounted self-contained refrigeration, stainless steel top, (2) locking doors, (2) 1/2 barrels capacity

Warranty Options



Parts & Labor Included

Shop Now



Related Brands



asber 
Back Bar Cabinet



BEVERAGE-AIR
Draft Beer Cooler



EVEREST **REFRIGERATION**
Cold Brew Dispenser

REMOTE CONDENSER UNIT

**PAYMENTS
AS LOW AS
\$33.85
PER MONTH**

**Equipment Guard
#1 in Equipment Protection**

Brand: Manitowoc

**Type: JCT1200 | 24' | Remote
Condenser Unit**

**Remote Condensing Unit, Vertical
Discharge, air-cooled, IT-1200N series,
AHRI, UL, CE**

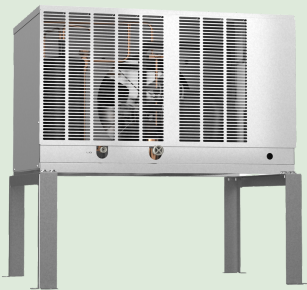
Warranty Options



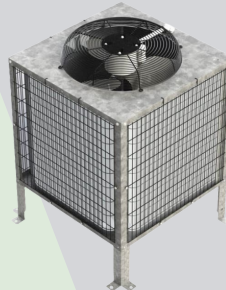
Parts & Labor Included

Shop Now

Related Brands



HOSHIZAKI
Remote Condenser Unit



Ice-O-Matic
Ice. Pure and Simple
Remote Condenser Unit



MANITOWOC
A Welbilt Brand
Remote Condenser Unit

COMMERCIAL FREEZERS



**PAYMENTS
AS LOW AS
\$297.79
PER MONTH**

**Equipment Guard
#1 in Equipment Protection**

Brand: Beverage Air

**Type: HBRF49HC-1-A | 52' |
Refrigerator Freezer, Reach-In**

**dual temp, reach-in, two-section,
hinged doors, digital display, stainless
steel interior & exterior**

Warranty Options



Parts & Labor Included

Shop Now

Related Brands



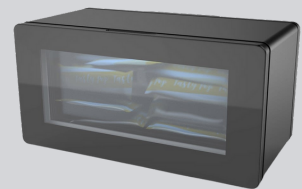
Admiral Craft
Equipment Corp.

Chest Freezer



**REFRIGERATION
EVEREST**

Undercounter Freezer



Migali®

TRUSTED SINCE 1955

Solid State Freezer

ICE CREAM, YOGURT & GELATO



**PAYMENTS
AS LOW AS
\$239.26
PER MONTH**

**Equipment Guard
#1 in Equipment Protection**

Brand: Nelson

**Type: 16 DIP HV | 0' | Display Case,
Dipping, Gelato/Ice Cream**

**Straight glass dipping cabinets have
clean lines and a top shelf that can be
used for cone holders, display cases**

Warranty Options



Parts & Labor Included

Shop Now



Related Brands



Blue Air
COMMERCIAL REFRIGERATION

Ice Cream Merchandiser



DELFIELD®

A Welbilt Brand

Dipping Cabinet



SPACEMAN
USA

Soft Serve Machine

ICE EQUIPMENT & SUPPLIES



**PAYMENTS
AS LOW AS
\$89.57
PER MONTH**

**Equipment Guard
#1 in Equipment Protection**

Brand: Manitowoc

**Type: S-200-2705515 | 30' | Ice
Dispenser**

**200 lb. ice storage capacity, lever
activated, includes: leg kit and drain
kit, stainless steel exterior**

Warranty Options



Parts & Labor Included

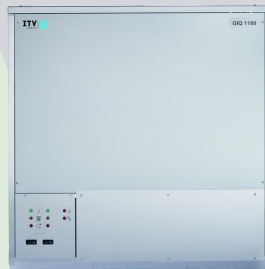
Shop Now

Related Brands



Ice-O-Matic
Ice. Pure and Simple

Ice Bin



ITV | 
ICE makers

Flake-Style Ice Maker



True

Ice Merchandiser

REFRIGERATOR DISPLAY CASES



**PAYMENTS
AS LOW AS
\$73.84
PER MONTH**

**Equipment Guard
#1 in Equipment Protection**

Brand: Ojeda USA

Type: 8 FLAVOR DIP | 50' | Display Case, Dipping Ice Cream

holds (8) 3 gallon tubs, (2) lockable tempered sliding glass lids, (5) baskets, adjustable thermostat

Warranty Options



Parts & Labor Included

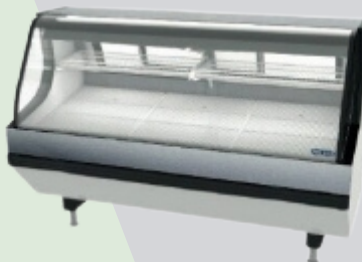
Shop Now

Related Brands



HOSHIZAKI

Sushi Display Case



PRO-KOLD

Dipping Ice Cream Case



True

Floral Case

WALK-INS



**PAYMENTS
AS LOW AS
\$271.67
PER MONTH**

**Equipment Guard
#1 in Equipment Protection**

Brand: Amerikooler

Type: DC060872NBRC | 8 X 6 | Walk
In Cooler, Modular, Remote**

**Indoor Walk-In Cooler, Without Floor, 4"
thick AK-XPS4 insulation providing R-29
for coolers and R-32 for freezers**

Warranty Options



Parts & Labor Included

Shop Now



Related Brands



**Combination Cooler
Freezer, self contained**



**Combination Cooler
Freezer, box only**



**Cooler, Modular, Self
Contained**