

General Information

Project Name: _____

Consultant: _____

Item #: _____

Model #: _____

Quantity: _____



Specifications

SC Model Storage Cabinets are constructed from 18GA type 300 series stainless steel, 7'-0" high with 6" sloped top (flat top available) and provided with five (5) adjustable shelves. Optional doors can be hinged or sliding.

Hinged doors are provided with lift off hinges, optional disc tumbler lock and a pull handle. Sliding doors have an overhead track and recessed door pull. Cabinets are polished with a brushed satin finish.

Product Guide

SC Storage Cabinets are ideal for Institutional and Public Buildings and Cook-chill Facilities. Their height and utility shelf arrangement provides higher storage volume within a compact floor space.

Glass door cabinets can be used in open kitchens or display areas of high profile kitchens.

Unit must be secured firmly to the wall during installation for best use & to avoid tipping over.

Options

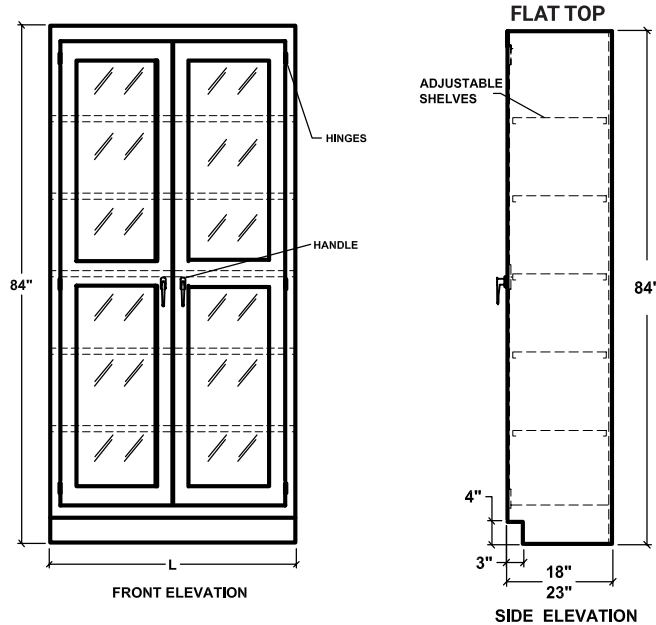
- DRL-2P** - Two Point Door Lock
- SECG1-SC** - 1/4" Tempered Glass (Per Door)
- PPC-6** - 5" Plate Poly Casters (Set of 6)
- PPC-5** - 5" Plate Poly Casters (Set of 4)
- TK** - Add Legs in Lieu of Toe Kick
- CSGD2** - Center Rail Glass Door (Per Door)
- EXSH** - Extra Shelf (5 Standard)
- FSH** - Fixed Shelves
- FLT** - Flat Top
- KEY** - Replacement Keys



SC-70 0124



DRAWINGS



STORAGE CABINET

Open Front Model #	Hinged Doors Model #	Sliding Doors Model #	Size (W x L x H)	Doors
□ SC-1824	□ SC-1824HS	—	18" x 24" x 84"	1
□ SC-1830	□ SC-1830HS	□ SC-1830SS	18" x 30" x 84"	2
□ SC-1836	□ SC-1836HS	□ SC-1836SS	18" x 36" x 84"	2
□ SC-1848	□ SC-1848HS	□ SC-1848SS	18" x 48" x 84"	2
□ SC-1860	□ SC-1860HS	□ SC-1860SS	18" x 60" x 84"	3
□ SC-1872	□ SC-1872HS	□ SC-1872SS	18" x 72" x 84"	3
□ SC-1884	□ SC-1884HS	□ SC-1884SS	18" x 84" x 84"	4
□ SC-1896	□ SC-1896HS	□ SC-1896SS	18" x 96" x 84"	4
□ SC-2324	□ SC-2324HS	—	23" x 24" x 84"	1
□ SC-2330	□ SC-2330HS	□ SC-2330SS	23" x 30" x 84"	2
□ SC-2336	□ SC-2336HS	□ SC-2336SS	23" x 36" x 84"	2
□ SC-2348	□ SC-2348HS	□ SC-2348SS	23" x 48" x 84"	2
□ SC-2360	□ SC-2360HS	□ SC-2360SS	23" x 60" x 84"	3
□ SC-2372	□ SC-2372HS	□ SC-2372SS	23" x 72" x 84"	3
□ SC-2384	□ SC-2384HS	□ SC-2384SS	23" x 84" x 84"	4
□ SC-2396	□ SC-2396HS	□ SC-2396SS	23" x 96" x 84"	4

Specifications subject to change without notice.

SC-70 0124