

Project \_\_\_\_\_  
Item \_\_\_\_\_  
Quantity \_\_\_\_\_  
CSI Section 11400  
Approved \_\_\_\_\_  
Date \_\_\_\_\_

# Master Series Heavy Duty Combination Top Range

## Models

- MST42R
- MST42S
- MST42T
- MST42R-E
- MST42S-E
- MST42T-E



**Model MST42R-E  
Range with 17" Valve Control  
Griddle and Two Open  
Burners**

## Standard Features

- Stainless steel front and sides.
- 6" (152mm) chrome steel adj. legs
- 7-1/2" (191mm) stainless steel front rail
- Two(2), 2-piece Starfire open burners w/removable heads rated 30,000 BTU (8.78kW) CE approved or 35,000 BTU (10.25kW) CSA approved models, (natural or propane gas)
- Removable ring grates over each burner & cast iron top grates
- Stainless steel drip tray under open burners
- Griddle with 1" (25mm) thick steel plate on left, with 30,000 BTU (8.78kW) "H" type burner controlled by Hi-Lo valve
- 2-5/16" (59mm) high welded steel splash guards, sides & back for griddle
- Clip-on stainless steel backsplash for griddle plate
- Removable front-mounted stainless steel grease receptacle
- Fully porcelainized oven interior
- Piezo Spark ignition for oven
- 40,000 BTU (11.72 kW) natural gas, 35,000 BTU (10.25 kW) propane gas cast iron oven burner
- Electric Spark ignition on all pilots Suffix -E models
- Sentry total flame failure protection for all burners

## Options & Accessories

- Stainless steel main back
- Stainless steel common front rail up to 102" (2591mm) wide (2 or more units in a battery)
- Fully grooved griddle (or grooved sections)
- Stainless steel oven interior
- Convection oven base, add C to model #, e.g. MST42RC
- Additional oven rack
- Rear gas connection, 3/4", 1", or 1-1/4" NPT
- Gas regulator 3/4" or 1-1/4"
- Gas shut off valve; 3/4", 1" or 1-1/4" NPT
- Gas flex hose & quick disconnect (3/4", 1" or 1-1/4" NPT x 5') w/ restraining device, please specify
- End caps and cover (NC, Specify)
- Set of (4) Polyurethane non-marking swivel casters w/ front brakes
- 6" (152mm) stainless steel adj. legs
- Dais base (not for use with "RC" oven)
- Stainless steel tubular high shelf, single or double deck
- Stainless steel backguard: 10" (354mm), 17" (432mm) or 33" (838mm)
- 230 volt, 50 cycle components, RC motor and/or electric ignition (export)
- Celsius dial for oven thermostat (NC)

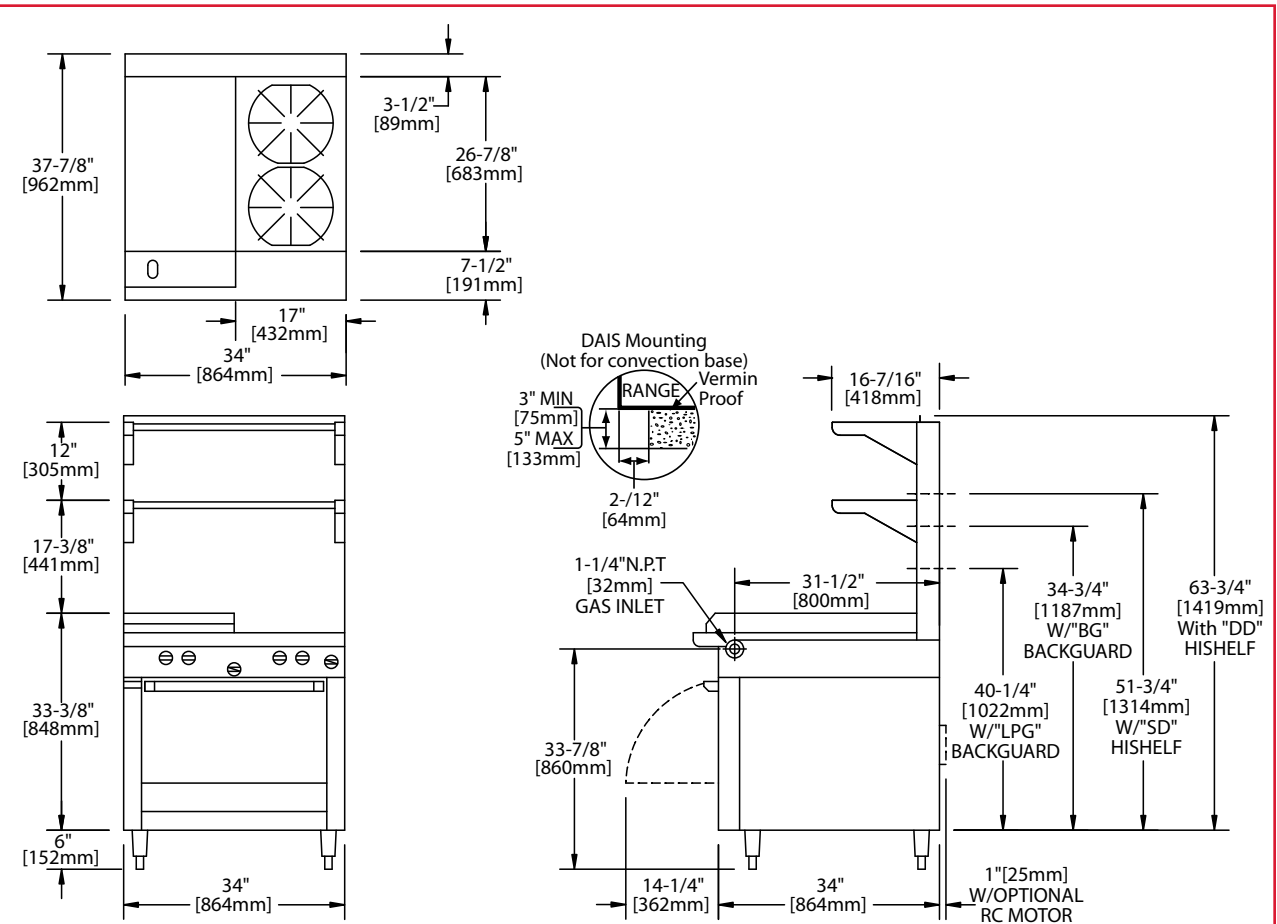
## Specifications

Heavy-duty combination top gas range with oven, One 17" (432mm) W x 25" (635mm) D, 1" (25mm) thick, Hi-Lo valve griddle on left, 30,000 BTU (8.78kW), bordered side and rear by continuously welded stainless steel splash guard. Two 30,000 BTU (8.78kW) Starfire open burners with removable heads. Sentry total flame failure protection for all burners. Heavy duty cast iron top grates/ring grates on right only, 34" (864mm) W x 38" (965mm) D, including 7-1/2" (191mm) deep stainless steel front rail. Porcelain enamel oven interior with 40,000 BTU (11.72kW) cast iron burner. Stainless steel front and sides. Natural or propane gas available. Also available with storage base w/ doors, suffix S, and modular top, suffix T.

NOTE: Ranges supplied with casters must be installed with an approved restraining device.



# Master Series Heavy Duty Combination Top Range



Product	Width: In(mm)	Depth: In(mm)	Height: In(mm) (w/ NSF Legs)	Height: In(mm) (w/o NSF Legs)	Oven/Storage Base Interior: in(mm)		
					Width	Depth	Height
MST42R	34(864)	38(965)	36-3/8(924)	30-3/8(772)	26-1/4(667)	29(737)**	13-1/2(343)
MST42S	34(864)	38(965)	36-3/8(924)	30-3/8(772)	26(665)	30-1/2(773)	20-1/2(519)
MST42T	34(864)	38(965)	36-3/8(924) w/stand	9-1/2(241) w/o stand*	N/A	N/A	N/A

\*Modular top has 1-1/2" seating flanges. \*\*RC oven is 25" (635mm) deep.

INPUT-BTU/hr	MST42R(C)		MST42S & MST42T	
	Natural	Propane	Natural	Propane
Griddle Top	30,000 (8.78kW)	30,000 (8.78kW)	30,000 (8.78kW)	30,000 (8.78kW)
Open Top: CE Approved Models	60,000 (17.57kW)	60,000 (17.57kW)	60,000 (17.57kW)	60,000 (17.57kW)
Open Top: CSA Approved Models	70,000 (20.50kW)	70,000 (20.50kW)	70,000 (20.50kW)	70,000 (20.50kW)
Oven: CE and CSA Approved Models	40,000 (11.71kW)	35,000 (10.25kW)	N/A	N/A

RC=Range w/Convection Oven R=Range w/Oven S=Range w/Storage Base T=Modular Top

Installation Notes			Shipping Wt: (Lb/Kg)?
Combustible Wall Clearances <sup>1</sup>	Entry Clearances	Operating Pressure	MST42R 520/326
Sides: 11" (279mm)	Crated: 39-1/4"(997mm)	Natural: 6" WC (15mbar)	MST42S 420/191
Back: 6" (152mm)	Uncrated: 34-1/4" (870mm)	Propane: 10" WC (25mbar)	MST42T 330/150

<sup>1</sup>NOTE: Installation clearance reductions are applicable only where local codes permit.

<sup>2</sup>Shipping Cubic Feet 50 for R & S Models, 20 for T models

Gas input ratings shown here are for installations up to 2,000 ft. (610m) above sea level. Specify altitudes over 2,000 ft.

Electrical characteristics each RC oven: 1/3 HP motor, 120 VAC, single phase, 3.4 amps, 6 ft. (1.8m) power cord with NEMA 5-15P plug provided. 230 VAC export is direct connect, single phase, 50 Hz.

Please specify gas type when ordering.

Welbilt reserves the right to make changes to the design or specifications without prior notice.