

Project \_\_\_\_\_  
Item \_\_\_\_\_  
Quantity \_\_\_\_\_  
CSI Section 11400  
Approved \_\_\_\_\_  
Date \_\_\_\_\_

# Master Series Heavy Duty Combination Top Range

Master Series Heavy Duty Combination Top Range

## Models

- M43-1R                      • M43-2R                      • M43-3R
- M43-1S                      • M43-2S                      • M43-3S
- M43-1T                      • M43-2T                      • M43-3T



Model M43-2R  
Range With Even Heat Hot  
Top and Open Burners  
Combinations

## Standard Features

- Stainless steel front and sides.
- 6" (152mm) chrome steel adj. legs
- 7-1/2" (191mm) stainless steel front rail
- Two, 24,000 BTU (7kW) Natural, 20,000 BTU (5.86kW) Propane Starfire Burners per section
- Removable cast iron top and ring grates
- One piece stainless steel drip tray
- Extra heavy duty cast iron even heat hot top sections with "H" burners, 22,000 BTU (6.45kW) each
- Separate control valves for each burner
- Stainless steel burner box bottom
- Piezo spark ignition for oven
- 40,000 BTU (11.72kW) Nat., 35,000 BTU (10.25kW) Pro., cast iron oven burner.
- Fully porcelainized oven interior

## Options & Accessories

- Stainless steel main back
- Stainless steel common front rail up to 102" (2591 mm) wide (two or more units in a battery)
- Stainless steel oven interior
- Convection oven base, add C to model #, e.g. M43-1RC
- Additional oven rack
- Rear gas connection, 3/4", 1" or 1-1/4" NPT
- Gas regulator 3/4" or 1-1/4"
- Gas shut off valve; 3/4", 1" or 1-1/4" NPT
- Gas flex hose & quick disconnect (3/4", 1" or 1-1/4" NPT x 5') w/ restraining device, please specify
- End caps and cover (NC specify)
- Set of (4) Polyurethane non-marking swivel casters w/front brakes
- 6" (152mm) stainless steel adj. legs
- Dais base (not for use with RC oven)
- Storage base shelf of aluminized or stainless steel
- Stainless steel tubular high shelf, single or double deck
- Stainless steel backguard: 10" (354mm), 17" (432mm) or 33" (838mm)
- Stainless steel equipment stand option for modular top models.
- 230 volt, 50 cycle components, RC motor (export)
- Celsius dial for oven thermostat (NC)

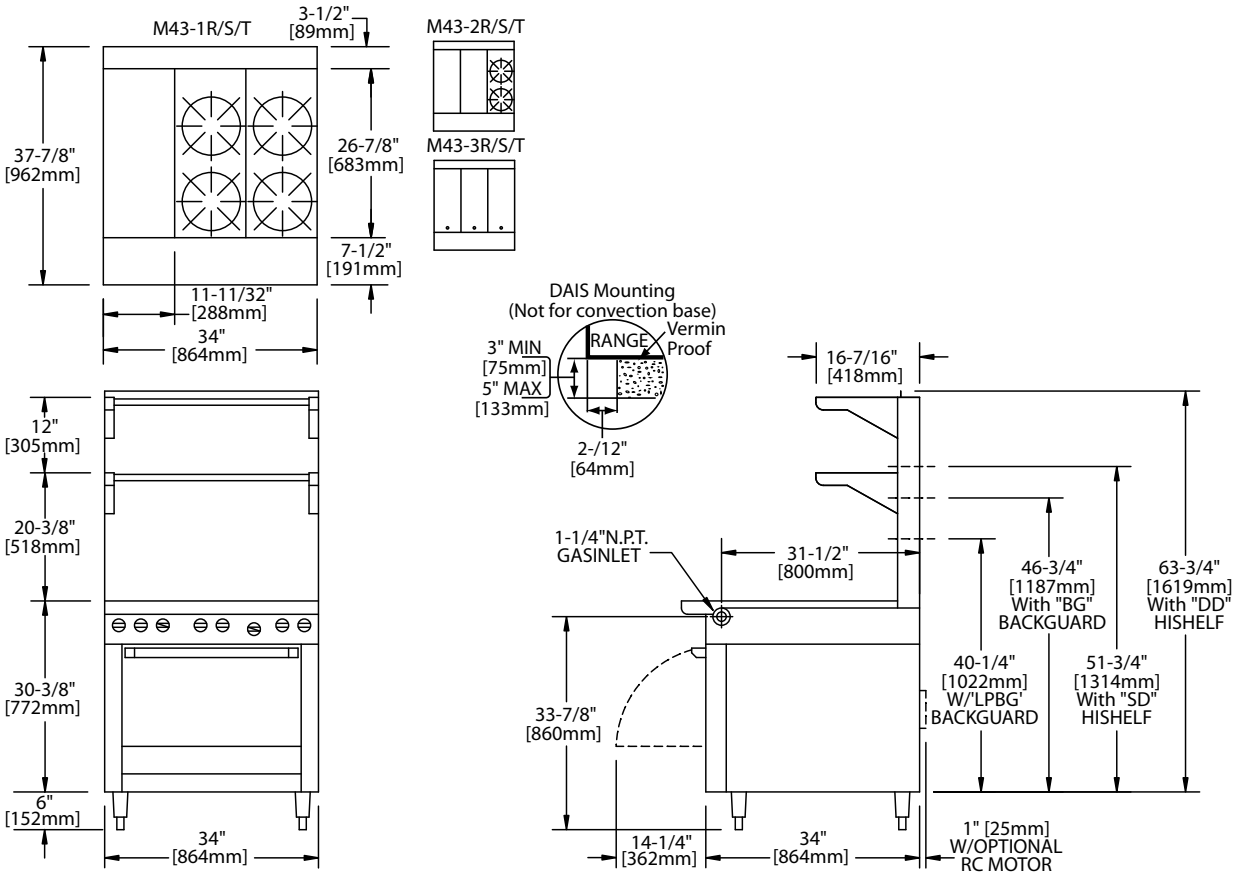
## Specifications

Heavy duty gas range with oven, open burners and hot top sections combined. Hot top sections each 11-5/16" (286mm) wide cast iron even heat, 22,000 BTU (6.45kW). Open top Starfire burners, 24,000 BTU (7.0kW) each, two burners per section with removable cast iron top and ring grates. Range body is 34" (864mm) wide x 38" (965mm) deep, including 7-1/2" (191mm) deep stainless steel front rail. Porcelain enamel oven interior with cast iron oven burner. Stainless steel front and sides. Natural or propane gas. Models available with oven base sections (suffix R) storage base with cabinet door (suffix S), or modular top units (suffix T).

NOTE: Ranges supplied with casters must be installed with an approved restraining device.



# Master Series Heavy Duty Combination Top Range



Product	Width: In(mm)	Depth: In(mm)	Height: In(mm) (w/ NSF Legs)	Height: In(mm) (w/o NSF Legs)	Oven/Storage Base Interior: in(mm)		
					Width	Depth	Height
M43-XR	34(864)	38(965)	36-3/8(924)	30-3/8(772)	26-1/4(667)	29(737)**	13-1/2(343)
M43-XS	34(864)	38(965)	36-3/8(924)	30-3/8(772)	26(665)	30-1/2(773)	20-1/2(519)
M43-XT	34(864)	38(965)	36-3/8(924) w/stand	9-1/2 (241) w/o stand*	N/A	N/A	N/A

X=1,2 or 3 NOTE: \*Modular top has 1-1/2" seating flanges. \*\*RC oven is 25"(635mm) deep.

Total INPUT BTU/Hr x 1000(Kw)	M48-45R	M48-51R	M48-68R	M48-45S/T	M48-51S/T	M48-68S/T
Top Section Natural Gas	228 (66.78)	132 (38.65)	198 (57.98)	228 (66.79)	132 (38.65)	198 (57.98)
Top Section Propane Gas	212 (62.08)	132 (38.65)	198 (57.98)	212 (62.08)	132 (38.65)	198 (57.98)
Oven(s) 1 burner each Natural Gas	80 (23.44)	40 (11.72)	80 (23.44)	N/A	N/A	N/A
Oven(s) 1 burner each Propane Gas	70 (20.50)	35 (10.25)	70 (20.50)	N/A	N/A	N/A

RC=Range w/Convection Oven R=Range w/Oven S=Range w/Storage Base T=Modular Top  
 \*\*\* Open Top Burner rated 20,000 BTU (5.86kW) and Oven Rated 35,000 BTU (10.25kW) for Propane ga

Installation Notes			Shipping Wt: (Lb/Kg)
Combustible Wall Clearances <sup>1</sup>	Entry Clearances	Operating Pressure	M43-XR 470/214
Sides: 11" (279mm)	Crated: 39-1/4" (997mm)	Natural: 6" WC (15mbar)	M43-XS 370/163
Back: 6" (152mm)	Uncrated: 34-1/4" (870mm)	Propane: 10" WC (25mbar)	M43-XT 280/128

<sup>1</sup>NOTE: Installation clearance reductions are applicable only where local codes permit.

<sup>2</sup>Shipping Cubic Feet 50 for R & S Models, 20 for T models

Data applies only to North America

Gas input ratings shown here are for installations up to 2,000 ft. (610m) above sea level. Specify altitudes over 2,000 ft.

Electrical characteristics each RC oven: 1/3 HP motor, 120 VAC, single phase, 3.4 amps, 6 ft. (1.8m) power cord with NEMA 5-15P plug provided. 230 VAC export is direct connect, single phase, 50 Hz. Please specify gas type when ordering.

Welbilt reserves the right to make changes to the design or specifications without prior notice.